

# Laurel Leaves

spring & summer 2022

[Summer Update](#) | [Assistant Director Search](#) | [Many Hands Make Light Work](#) | [Answer the Call](#) | [Circle Week Turns 10 Years Old!](#) | [Diversity, Equity, & Inclusion at Fleur de Lis](#) | [CT News](#) | [Big & Little Weekend](#) | [Introducing the Farmhouse & Unit Heads of 2022](#) | [Corporation Nomination](#) | [Summer Dates to Remember](#)

---

## *Summer Update from Lady MJ...*

Wow! Summer 2022 is almost here! In a matter of days, we will be welcoming our staff and campers to Fleur de Lis. We are so excited to see all the smiling faces, hear the laughter and singing, and be a place where we all learn and grow and make friendships and memories that last a lifetime.

Our international staff will be arriving on June 10th, and on June 12th specialized skills training week begins and will include lifeguarding, ceramics and stained glass training as well as brushing up on archery and riflery skills. Pre-camp beginning on June 17th will be a busy week for staff. Staff will participate in a variety of workshops focused on working with girls, mental and emotional health, diversity and inclusion, health and emergency procedures, and more. Time will be spent in activity areas with lesson planning, skills review, and practice teaching and staff will plan for how to make their Fields be the best place for their campers. All this before campers arrive on June 25th!

We all hoped that Covid would be well behind us by now, however we still need to have protocols in place to insure the health and safety of our campers and staff. Our goal is to have camp as normal as possible as

quickly as possible so we will be using screening testing on arrival day and 3 days into the session and “podding” until we have passed our second round of tests. After that we anticipate being able to have camp function much more like it has for so many years. Happily, one big “back to normal” is that everyone will be eating in the dining hall (no more tents!) and meals will be served family style once again. We actually found some of our changes that we had to make last year such as more activities being held outdoors and enhanced sanitation, were so successful that we will carry those forward. We are fortunate that we learned so much last summer and we are confident that we can have a successful summer once again.

Our camp is looking beautiful! Richard and our property helpers have been hard at work – brush clearing, painting, cleaning, repairing shutters and tent platforms, etc. etc. We know one addition that girls will definitely appreciate is a brand-new Gaga Pit. Don’t know what Gaga Ball is? Click [here](#). We can’t wait to be fully immersed in our daily activities, special events, traditions, and the joy of play!

We’re also very excited that our beloved Circle Week will once again be held for girls that have had a parent pass away. This is such an important and valuable experience for these girls, their families and our staff and we’re thrilled that Co-Directors, Kate Young Allen and Jenn Maynard will be leading this program.

We will finish off the summer with our Big & Little Weekend August 26-28 for a “big” mom, aunt, or grandmother to introduce their “little” to camp.

We do still have spots in our 7-week program, Circle Week and Big & Little weekend, so please share the story of Fleur de Lis with people you know. It’s one of the best gifts you can give!

I know that for all of you have experienced Fleur de Lis, you can imagine the excitement, anticipation and perhaps a bit of nervousness, that our campers and staff are feeling right now. Quite possibly, you are also wishing that you were going to be on Laurel Lake this summer too!

Here’s to a great summer! MJ

[back to top](#)

---

## Assistant Director Search

We’re so excited to have Grace Goodrich, our new Assistant Director, in place and getting ready for the summer!

Grace earned her bachelor’s degree in Education and Child Studies from Smith College and brings a wealth of experience in youth development and education. She taught for several years in the classroom, as a tutor, and as a life skills coach at the elementary, middle, and high school level. Her passion and commitment to the value of camp comes from spending eight seasons at a camp in New Hampshire that is

very similar in philosophy to Fleur de Lis. She began as a music counselor, moved into the Head of Swimming, and then served as the Lower and Middle Camp Director.

Grace has jumped into Fleur de Lis with two feet! She has been busy with getting to know our program and procedures, meeting people in our community, leading our social media, and introducing herself to new and returning campers with postcards and 1st timer camp packages. Grace recently became re-certified as a lifeguard and is studying for her NH commercial boat license in preparation for the summer.

Grace can't wait to be immersed in the camp season! One of Grace's roles this summer will be to provide oversight for our activity areas. She brings her experience as a teacher, summer camp counselor and supervisor to mentor our staff in lesson planning, developing activity progression, and teaching skills. It's a plus that she has great experience on a camp waterfront, leading music programs and being actively involved in a variety of other camp activities. We are very excited that we will be running Circle Week again this summer and Grace will be providing support to this very special program.

Grace will be joined at camp by her dog, Goose, who has also jumped into camp with two feet – or more accurately four feet! While Grace is excited to take her first dip in Laurel Lake, Goose has already discovered the frog pond, the beaver pond and the lake - and he loves all three!

We're so glad you have joined the Fleur de Lis community Grace!

---



[back to top](#)

---

## Many Hands Make Light Work

We had a very successful Work Day at camp on May 15th. We had a small but energetic and dedicated group of alum that painted so many tent platforms Fleur de Lis red. They look beautiful and there's nothing like taking on and finishing a much-needed task with good friends and good conversation. The amount of painting that was done that day would have taken our property folks several days to accomplish alone – well done!



We also had another group of volunteers from Monadnock High School. This was one new experience stemming from another, being the host site on May 21st of the prom for the Juniors and Seniors of Monadnock High. This hard-working group of students not only cleaned the dining hall, washed windows, and moved tables in preparation for the prom, but they also weeded, swept out cabins and the Barn, moved many boxes of supplies, and did an incredible job of clearing brush and downed wood from the Point Trail, The Point and Treat Beach – the results were amazing!!! And P.S. the prom was a huge success!

Huge thanks to all for helping to get camp ready for the summer – many hands really do make light work!





[back to top](#)

---

## **Answer the Call**

**By Libby Nichols Collet**

Hark, hark, Fleur-de-Lis' calling... just the words bring a smile to my face. To those of you who don't know me I was a camper, CT, and counselor at FDL and more recently a bunk counselor & lifeguard at Circle Week (in my late 50s). I will forever have fond memories of all those summers. More recently I've been helping with the Development Committee and wanted to share the importance of supporting camp and the various ways to make a financial contribution. First and foremost, thank you for your current support!

I'll admit, I wasn't aware that philanthropy was an important part of the equation at FDL. As with other well run overnight camps, contributions allow the camp to thrive, expand programs, update facilities, and attract and train outstanding staff, while keeping the cost to families affordable and providing tuition assistance for others. While working for a nonprofit organization in Maine, I was introduced to the concept of modeling philanthropy to the younger generation. While large gifts are wonderful, smaller gifts are also an important part of having a broad, diverse, donor base and passing along the value of stewardship to others. Our website has information about various ways to give and I wanted to highlight the following three:

### **I. Recurring Gifts**

We have a growing community of monthly donors. Many began during the Come Home to Fleur de Lis campaign; others have been with us for quite some time. Small monthly gifts add up over time and the camp benefits from a steady flow of funds over the course of the year.

### **II. Planned Giving**

When I updated my will to include a gift to FDL, I was so touched that my spouse had our attorney include the same language in his. He, like many others, has seen the Joy, Friendship, and Belonging the camp experience (and reunions with camp friends) provides and personally wanted to contribute to Fleur de Lis' legacy. There are simple ways to make a bequest in a will and there are more complex estate planning instruments that some use. Let us know if you want more general information about options to consider.

### III. Matching Gifts

An increasing number of companies are matching gifts given by their employees to nonprofit organizations. This is a wonderful way to broaden our base of financial support. Check to see if your employer offers this option.

Visit our website at [www.fleurdeliscamp.org](http://www.fleurdeliscamp.org) for other ways to make a gift of any size to camp. Join those who have "answered the call" by providing financial support to Fleur de Lis in an amount and way that works best for you.

Development Committee,

Libby Nichols, Collet Chris Creelman, Di Foster, Jane Lawson, MJ Parry, and Hilary Robinson

If you have questions or suggestions for the Committee, let us know. Thank you again for supporting Fleur de Lis.

[back to top](#)



## Circle Week Turns 10 Years Old!

We are excited to have Circle Week return to camp this summer, August 15th — 20th, after a two-year hiatus. Fleur de Lis Camp Circle Week has run since August of 2013. This year marks our 10th birthday

and we plan to celebrate! Ladies Jenn and Kate have lots of fun planned, including a full camp birthday party, for all who attend. We could use the Fleur de Lis community's help, in order to have the best week possible! Circle Week relies on its volunteer staff to support and facilitate a week's worth of fun. Here is a list of ways in which you can help and/or volunteer your time:

- **Volunteer to be a tent/cabin counselor for the week!** Live with the girls and supervise during cabin time and overnight. No prior camping experience is necessary.
- **Volunteer to run a camp activity, for a day or throughout the week.** Do you have a special hobby, skill, or teaching certification? Spend a day or more teaching it to the girls! Examples of activities include yoga, drama, arts & crafts, knitting, sewing, pottery, plant identification, nature walks, guided meditation, dance, athletics, etc.
- **Be a lifeguard!** Spend a day or more lifeguarding our swimmers on Laurel Lake. (Lifeguard certification required.)
- **Spread the word!** Reach out to a girl(s) or family of a girl(s) whose parent has died and share word of our program with them. We have additional information you can provide, if they are interested. (Contact us at one of the emails listed below.)
- **Volunteer to wash dishes or set tables!** Get a group of your camp friends to join you for a day. It may come as a surprise but this is one task where we find an extra set of helping hands to be imperative.
- **Help us plan our birthday!** Purchase birthday celebration supplies. If you are on site, help to run and plan the celebrations for the week.
- **Help us to gather supplies!** Purchase supplies for activities, bunk boxes, and volunteers.
- **Welcome our campers and families!** Greet them as they arrive at the bus stops in Lowell, MA and Keene, NH.
- **Ride the bus with the girls to and/or from camp!**
- **Help with COVID-19 Safety Protocol!** Perform and monitor rapid antigen tests at the bus stops, during drop off.
- **Volunteer to help with the before camp planning and organizing!** Help us get things set up.
- **Make a donation!** It is crucial to the mission of Circle Week, that we continue to offer our program to our campers for free. Every dollar counts— however big, however small!

We'd love to have you volunteer for the week and understand if you aren't able to. We'll take you for multiple days or one day... even half a day. Every bit of community engagement and passionate volunteer helps! If you are able to volunteer with us, in any way, please contact one of our co-directors:

Kate Allen: [circle2@fleurdeliscamp.org](mailto:circle2@fleurdeliscamp.org)

Jenn Maynard: [circle@fleurdeliscamp.org](mailto:circle@fleurdeliscamp.org)

We are so very grateful for this community's continued support! We are looking forward to the summer ahead and many more to come.

In gratitude,

The Circle Week Team

[back to top](#)

---

## Diversity, Equity, & Inclusion at Fleur de Lis



Over this past year, we have continued to work with our [Strength Perspective](#) consultants to move forward in our commitment to build a more supportive, equitable, and welcoming camp community that can support an increasingly more diverse camper and family population. This has included educational work with our consultants and the board, as well as work to map out a plan and timeline for expanding this work throughout our community. Our consultants provided summer staff training in 2021 and will do so again for the upcoming 2022 season.

Additionally, work with our consultants has helped us move forward on building a DEI committee for FdL. This began with the formation of a Core Committee that includes board member Allison McCartney, as chair; director MJ Parry; board president Diane Foster; and corporation members Samantha Keogh and Linda Wickenden O'Malley. The Core Committee works closely with our consultants. This group first worked to write specific definitions of DEI terms, as related to Fleur de Lis. These definitions will be



finalized by the full committee. The Core Committee next formulated an application process for the full committee, which will be distributed to the full FdL community. For more information, please review below.

#### DEI Committee Information

Fleur de Lis is establishing a DEI (Diversity, Equity, and Inclusion) Committee and is excited for you to learn more about this opportunity and consider being a part of this important and impactful group. Fleur de Lis' dedication to improving the organization's ability to deliver our mission to "promote the well-being of girls and young women socially, educationally, and physically [providing] opportunities and experiences, to help them become self-sufficient and productive members of their community and the world" plays a critical role in the organization's ability to address diversity, equity, and inclusion. The work of the DEI Committee is tied to our mission.

The DEI committee will be tasked with defining and working toward specific goals and holding the organization accountable. Once a full committee is formed, that committee's overarching goal will be to answer the following key questions:

- Where are we?
- Where are we going?
- How will we get there?
- Are we getting there?

In collaboration with our consultants at [Strength Perspective](#), a core group has been undertaking this important work; now is the time to expand into a full committee. If you are interested in supporting the success of this DEI initiative, we want to hear from you! Please, take the time to complete the [application](#). We will use this information to get to know more about you. If you have any questions or if you would like to recommend someone for this work, please reach out to [dei@fleurdeliscamp.org](mailto:dei@fleurdeliscamp.org).

We are seeking individuals from our community who are former/current board members, staff, parents, adult alumni, and volunteers who will:

- Represent a diversity of backgrounds and perspectives
- Commit to a one-year term
- Attend monthly meetings with some responsibilities between meetings

The core committee will be reviewing applications through the summer with the goal of establishing the full committee in September.

It has been truly inspiring to witness the number of people from across our community who are dedicated to making Fleur de Lis an evermore welcoming and supportive place where each one of our campers and families feels a strong sense of belonging. We look forward to this next step in our process with

motivation, commitment, and hope. Thank you for your continued investment as we figure this out together!

Fleur de Lis DEI Core Committee:

Allison McCartney, DEI Core Committee Chair

Diane (Di) Foster (Board President)

Samantha Keogh

Linda Wickenden O'Malley

MJ Parry (Executive Director)

[back to top](#)

---

## CT News



Lady Julie Horton and Lady Molly Couch Ward are so excited to welcome 18 CTs to camp for the summer of 2022! We will have 10 second-years and 8 first years. Our CTs will take part in a variety of leadership training workshops, practice teaching skills in various activity areas, and learn the ins and outs of working with our girls in the fields. Most of the second-year CTs earned their lifeguard certification last summer and are looking forward to putting that to good use! Our new CTs will have the opportunity to take the LGT course, within the first few weeks of camp. After a summer of paper plates and buffet-service lines, the CTs are looking forward to a more typical summer with dish and kitchen duties being added back into

the squad line-up. Yay for dish! And yay for Jackson (our faithful dishwasher)! Not to mention, access to the CT cottage both sessions! We are all thrilled to welcome the first-years to the team and all things CT! These young ladies do so much to support the efforts of camp and we can't wait to welcome them all on June 24th!

[back to top](#)

---



## Big & Little Weekend

Big & Little Weekend is a great opportunity for an adult woman to introduce a young girl (ie. your daughter, niece, granddaughter, etc.) to camp before signing on to attend as a 3.5 or 7 week session camper. Girls are given the opportunity to try out activities, meet some of the staff, and experience what camp is all about in the company of a familiar adult.

Dates: August 26 - 28th, 2022

[Enroll Here](#)

[back to top](#)

---

## Introducing the Farmhouse & Unit Heads of 2022



**MJ Parry**  
*Director*

Lady MJ hails from Jaffrey, NH. This is her fourth summer at camp! There is no off season for her— she runs the show 365 days a year! However, in her free time she enjoys spending time with her husband, Charles, and their dog, Jackson. She also loves canoeing!



**Grace Goodrich**  
*Assistant Director*

Lady Grace hails from Providence, RI. Having been brought on as Assistant Director just a couple of months ago, this is her very first summer at camp! She loves to swim and hike, bakes a legendary apple pie, and is a singer-songwriter in her free time.



**Heidi Scanlon**  
*Program Director*

Lady Heidi hails from Boston, MA. This is her 21st summer at camp! In the off season she works at LL Bean. She loves to bake in her free time!



**Melissa Alexander**  
*Office Manager*

Lady Melissa hails from Swanzey, NH. This is her 3rd summer at camp! In the off season, she works as an Admin Assistant at a high school. She loves to craft, especially with her laser engraving machine!





**Molly Ward**

*CT Program Director*

Lady Molly hails from Easthampton, MA. This is her 11th year at camp! In the off season she works at a garden center, organizes seasonal children's consignment sales, and dabbles in social marketing. She is a wife and mother to two adult kiddos, two cats, and two dogs. She loves to organize things!



**Julie Horton**

*CT Program Director*

Lady Julie hails from Littleton, MA. However she grew up just around the corner from camp! This is her 10th summer at camp! In the off season she works as a high school math teacher. She finished her 10th marathon in January!



**Hannah Fricke**

*Waterfront Director*

Lady Hannah hails from Burlington, VT. This summer will be her 15th year at camp! In the off season, she is getting her masters in Occupational Therapy and work in child behavioral health! In



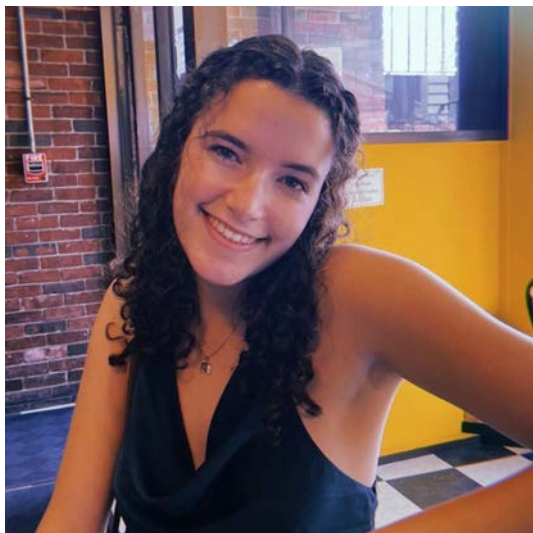
**Pam Fricke**

*Photographer*

Lady Pam hails from Hoosick, NY. She *thinks* this is her 24th summer! In the off season, she is a middle school Spanish teacher but hopes to retire very soon! She loves photography, particularly documentary and street photography, and

her free time she is really involved in dog training!

combining it with her travels. She also loves to knit!



**Alex Putney**  
*Senior Unit Head*

**Rachel Cass**  
*Mid Unit Head*

Lady Alex hails from Brookline, NH. This will be her 10th summer at camp. In the off season she is a college student studying Criminal Justice. Her favorite flavor of ice cream is Moose Tracks.

Lady Rachel hails from I am from Hancock, NH. This is her 14th summer at camp. She just returned from a semester abroad in Florence, Italy.



**Caroline Jones**  
*Junior Unit Head*

Lady Caroline hails from North Andover, MA. This will be her 12th summer at camp! In the off season she is studying Sociology and Ethical Development at American University in

Washington, D.C. She loves all things musical theater and astrology. She also loves mini M&Ms!

[back to top](#)

---

## Corporation Nomination

Dear Fleur de Lis Community,

Fleur de Lis Camp invites nominations and self-nominations to serve on the Fleur de Lis Corporation.

The Fleur de Lis Camp Corporation is a dynamic group of alumnae, community members and friends who demonstrate a commitment to the mission of Fleur de Lis and to sustaining camp well into the future.

Members of the Corporation serve as active, engaged volunteer leaders who lend their skills to committees, ranging from finance to development to recruitment to diversity, equity and inclusion, to organizing or sponsoring events to on-site support during the summer program. Corporation members are champions of the Fleur de Lis Camp experience, helping bring new families to camp and are committed to making Fleur de Lis Camp a volunteer and charitable priority for the duration of their term.

There are no limits on the number of terms Corporation members may serve, however, every five years, members are asked to actively re-commit to a new five-year term.

Fleur de Lis Camp actively seeks a Corporation with a diverse mix of perspectives, skills, experiences and backgrounds.

### How to Submit a Nomination

- Individuals who self-nominate should:
  - Review the **Corporation Member Duties and Responsibilities**
  - Complete the **Corporation Member Self-Nomination/Application Form**
  
- Individuals who are nominating someone else:
  - Please submit the nominees full name, email address and phone number

Nominations and supporting materials should be [sent via email](#) to Libby Williams, vice president, Fleur de Lis Camp Board of Directors, no later than **August 15th, 2022**.



### Process and Timeline

Upon receipt of a nomination, a member of the Nominating Committee will contact the nominee to discuss their interest in serving on the Corporation and to answer any questions. The nominee will then be asked to submit a Corporation Member Self-Nomination/Application Form.

Nominees' materials will be reviewed by the Nomination Committee and nominees will be invited for an interview with members of the Nominating Committee.

The final state of Board-approved candidates will be presented at and voted on at the summer Corporation Meeting.

Please [contact](#) Libby Williams, vice president of the Board of Directors, with any questions about the nominating process.

[back to top](#)

---

### Summer Dates to Remember



[back to top](#)

---



---

*Copyright © 2022 Fleur de Lis Camp*

Want to change how you receive these emails?  
You can update your preferences or unsubscribe from this list.