



Laurel Leaves

Fleur de Lis Camp Alumnae Newsletter



Fall 2017

Put Your Foot on a Loud, Loud, Loud Pedal. Make Lots of Noise!

Many of you remember this welcome song from your Fleur de Lis days. We use it today as the prelude to sending out our gratitude for Lady Jane Lawson. Jane stepped down as President of the Board of Fleur de Lis this summer, after serving as a leader of our camp for over three decades.

Jane first came to FDL as a third year Mid in 1959. Some of her fondest memories include being a part of the "Precocious Piglets" group



for Senior initiation. She can still sing her piglet song. A favorite counselor of hers was Lady Amy who was her Senior Unit Head and CT Director. Jane remembers finding a wooden raft in the cove near the CT Cottage with her friend Corky when she was a first year CT. They spent a lot of that summer playing on

that raft. As a counselor, she was a rifle instructor for two years. Fleur de Lis was, of course, undefeated during this time!

Jane's love for Fleur de Lis spread throughout her family. Jane's husband Rev. Howard Russell led the Fleur de Lis Coronation service for many years and currently serves as a Corporation member. Her step-daughter Kathy Russell Rogers attended camp for 9 summers while her step-daughter Elisa Russell Pollard worked for camp for over a decade. Jane's granddaughters, Megan Russell Washington, Nikki Russell Dubois, Stephanie Pollard Harrison, Jessica Pollard, and Sydney Rogers have all attended Fleur de Lis.

In 1973, Jane was voted onto the Corporation and Board. Lady Frances was President of the Board at that time and held closely most of the governance and financial responsibilities of camp. In 1984, Lady Frances stepped down. Diane (Pete, Nurse) Haessler became President and Jane took on the active role of Board Treasurer. Together they led Fleur de Lis through some lean times and some more prosperous ones, serving together for 20

Continued on page 12

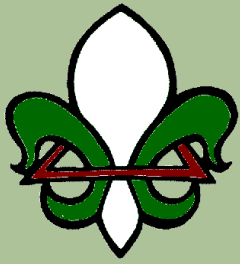
Inside this issue:

Page 1: Make Lots of Noise!
Page 2: Fundraiser & Fall Event
Page 3: Wish List
Page 3: FDL Dates 2017 & 2018
Pgs 4-5: Circle of Fleur de Lis
Pgs 6-7: Summer 2017

Page 8: Big & Little Weekend
Page 9: Best of the Best
Page 9: Retention & Recruitment
Page 10: Lady Nurse Service Day
Page 10: #FDLMonth & #CircleMonth
Page 11: Kimballs & Be Like Jane

Page 12: Make Lots of Noise cont.
Pgs 13 & 14: Welcome Corp. Members
Page 15-18: Donor List
Page 19: Announcements
Page 19: Stay in Touch
Page 20: FDL Mission

*Fleur de Lis
Camp*



Est. 1929

President

Diane Foster

Vice President

Libby Williams

Treasurer

Christine Hassig Cressey

Secretary

Elizabeth Ramos

Camp Director

Carrie Kashawlic

Fleur de Lis Core Values

Integrity

Loyalty

Service to Others

Caring Community

2017 Circle Fundraiser

Thank you to all who could attend this years' Circle of Fleur de Lis Fundraising Reception at the Empire Restaurant & Lounge in the Seaport District of Boston. What a pleasure it was to be able to share the stories of the girls who have the opportunity to attend Circle of Fleur de Lis. It is because of folks like you who attend this event and give to Circle of Fleur de Lis that we are able to provide a week of camp for these campers. A week where they can come to the woods of New Hampshire, swim in Laurel Lake, share about their parent that has passed, make life long friendships, and so much more. This year we raised just shy of \$15,000 for Circle of Fleur de Lis!



Apple Picking, Cider, & Donuts!

We had so much fun reconnecting with camp friends, telling stories from the summer, and picking apples at Carlson's Orchards this fall. Thank you to everyone who braved the rainy weather and came out to enjoy the friends, cider and donuts!



Wish Lists

Fleur de Lis

Vinyl zippered pillow covers (12)
Masking tape, (1" thick—lots and lots for plays)
Knitting needles (20—sizes 8-10, short lengths preferred)
Sleeping bag stuff sacks (5—not sleeping bags, just the sack that you stuff a bag into)
Paint brushes (for backdrop painting for plays)
Paint brushes & foam craft brushes (25 each for Crafts)
Crazy Glue (3 tubes for Stained Glass studio)
Quart size zip lock bags (100 for Stained Glass studio)
Sharpies (6, black for Stained Glass studio)
Thumb tacks (500—plain metal ones, not colored and no "head")
Highlighters (12—play scripts)
Clothesline rope (6)
Clothespins (100)
Bungee Cords (24 for tents)
Corn husk brooms (12—for tents/cabins, activity areas)
Dustpans (12—for all over camp)
Re-usable, freezable ice packs (6—for Health Center)
Softball mitts (6—both right & left handed; previously loved welcome)
Puffy Paint (48 for Crafts)
Sponges (24 for Crafts, Stained Glass, Ceramics etc.)
Magazines (for Crafts/mod podge materials)
Duct Tape (designs, 24 rolls for Crafts)
Elmer's Glue (6 school-size bottles for Crafts)
Ink Pads (for Crafts/stamping)
Green Taper Candles (12 for Ceremonies)
Red Taper Candles (12 for Ceremonies)
Water balloons (250)
Elastic (8 of each 1/8" and 1/2" for Sewing)
Poly Fill (10lb box for Sewing)
Tape Measure (4 for Sewing)
Fabric (large pieces for making clothing, stuffed animals in Sewing)
Gallon sized zip lock bags (50 for Sewing)

Circle of Fleur de Lis

Follow the below link to our
Amazon Wish list:
amazoncircle.fleurdeliscamp.org

Dates to Remember

October 31: Early Registration Ends
November 14: OAK/FDL Open House
Amesbury, MA
January 13: FDL Open House
Waban, MA
January 18: Acton Camp Fair. 5pm.
Acton, MA.
January 20: FDL Open House
Holliston, MA
January 21: Lincoln-Sudbury Camp Fair.
Sudbury, MA.
January 28: Tips on Trips Camp Fair.
Darien, CT.
February 11: New England Camp Fair.
Newton, MA. 11am.
February 28: Somerville Summer Camp & Activities Fair.
Somerville, MA.
March 1-30: #FDLMonth, #CircleMonth
March 3: Annual Corporation Meeting
March 4: Summer Camp & Activities Fair.
Chelmsford, MA.
March 4: Summer Camp Expo.
Dedham, MA.
March 11: Parenting New Hampshire Camp Expo.
Manchester, NH.
May 5: Kimball Farm
Westford, MA
June 9: Lady Nurse Service Day
June 23: Opening Day
July 8: Visiting Day
July 21: July Session Ends
July 22: August Session Begins
August 4: Family Day
August 12: Camp Ends
August 17-19: Big & Little Weekend
August 19-24: Circle Camp

Year 5 of Circle

This summer we celebrated our 5th birthday. This year brought us our biggest group of campers and volunteers yet, 52 campers and 40 plus volunteers. Almost 100 people in camp each day! Each day was busy with activities, but there were quiet times when we enjoyed our surroundings and each other's company.

One of those special times occurred each morning, at password. This is where all campers and volunteers meet to listen to thoughts and feelings shared by our volunteers. Our passwords this year were some of the best we've heard. We'd like to share with you sections from a few of those passwords.

....I'd like to think we are all champions in our daily lives, finding things to be happy about each day and by helping others to feel happy, loved and secure. I try to find something every day to smile about. I'd like you to try too....

whether it's on your way to school, on a walk with your dog or sitting on your steps watching a cat jump at a butterfly.

....There will be tough days too when being a champion is just putting one foot in front of the other, to get through the day, in hopes that the next day things will feel better. For all of us, life is a balance of good and bad things that happen to us, around us and to the ones we love. We are champions when we learn to live with all these ups and downs and keep walking forward, learning how to cope and continuing to make positive choices no matter what curveball life has



thrown at us. Finding that smile in your heart, that determination to make things better, and sticking with it, makes us champions.....

From the password: Champion

....there are still other ways to take Circle home with us. When you are back on your regular life and you are asked to do something that you may not feel like doing, you can remember how you participated in new or iffy things with your group at camp, and that you were surprised that it turned out to be okay, or maybe even fun. When you are challenged at home to do something difficult or scary, maybe you can remember the group that felt nervous about swimming out to the tubing tube, and after a whiz around the lake they were laughing and screaming their heads off. You will have some experience under your belt of having to try something new or of being in unfamiliar circumstances, and not just turning out okay, but being

of Fleur de Lis



a champion in our Circle community....

From the password: Take it with you

.....The good news is that we can always take the rocks out of our backpacks, or at least rearrange them to redistribute the weight. Just as each pebble adds weight, removing even the tiniest rock lightens the load-and that's always an accomplishment to be celebrated. Maybe you're nervous about a test or presentation in school. Just getting through it, no matter how you do, takes rock out of your backpack. Maybe you've had a disagreement with a close friend and it's weighing on you-make time to talk with and listen to them about it and you'll probably both be shedding some weight....

Some rocks are less temporary and harder to remove. Some rocks stay in our Backpacks our whole lives. Those ones usually start out as boulders-they make our backpacks drag on the ground and cause so much pain that it can be hard to think about anything else. Eventually, though, after weeks, months, or years of carrying them around, we grow stronger and our bodies adapt to the weight until suddenly this fear or worry or painful situation is less of a boulder-it takes up less room in our backpacks and puts less strain on our shoulders....

From the password: Rock on

Walking out of password each day, the girls would chatter about the days reading. Just a short few minutes made quite an impact on each camper. The mission of Circle Camp is to

give girls an opportunity to experience overnight camp while also sharing a space to grieve. The lessons learned in just five days are immeasurable and the fact that so many campers continue to return each summer is a testament to the work of our volunteers. We are already counting down to the summer of 2018!

Please come celebrate Circle of Fleur de Lis with us at our Circle fundraiser on October 13, 2017 at Empire, Seaport, Boston from 6:30 to 9:30pm.

To the campers and volunteers at Circle of Fleur de Lis 2017 remember...

We meet in the middle and celebrate the champion in each of us. Rock on! If you're stuck or feeling alone, Google it, and the people you trust. Cherish your time at Circle 2017 and take it with you.

- Ladies Jenn Maynard & Kate Young Allen



FDL Summer



WOW! What a great summer we had at Fleur de Lis in 2017! We saw 147 campers during the 7-week season and an additional 52 campers who enjoyed the Circle of Fleur de Lis Camp! Lady Hannah Weiner, Assistant Director for Camper Development, knocked it out of the park with 52 new campers for the summer season, and as close to an 80% retention as you could get and still be just slightly off. Campers had a fantastic time with 99% of all campers indicating they enjoyed their stay at camp and 96% of parents rating the camp experience as good/excellent. What a great season for all the campers, CTs, and staff. THANK YOU!

As you already know, Lady Jane Lawson stepped down as President at the summer Corporation meeting at the end of July. After 33+ years of service at Fleur de Lis, she was able to accomplish a final goal of helping raise the last \$100,000 to move our investment account up to \$1 million dollars! We are all so very grateful to our Fleur de Lis community for all your support—financial and otherwise—this season and over the years. This final goal was many years in the making and its success is due to your tenacity and dedication to camp with the ongoing commitment of Lady Jane's service for so many years. Thank you.



With strong financial footing and following the leadership legacy of only three other Presidents, Lady Diane (Di) Foster has taken up the reins and I am very excited to begin working with her more closely to help Fleur de Lis continue to thrive and grow.

It is an exciting time at Fleur de Lis. Our staff and Board leadership has developed in the last several years to position us to be able to make bold advancements while maintaining our traditions and the caring community based on our values of integrity/purity, loyalty and service that are the foundations of Fleur de Lis.

Lady Sarah Castro, Assistant Director for Advancement, joined our professional team in the winter and she successfully experienced her first Fleur de Lis summer as one of our CT Directors and jumped right in with the Circle of Fleur de Lis program to celebrate our fifth anniversary with volunteer Co-Directors Ladies Kate Young Allen and Jennifer Maynard! Lady Karin Strickland, Accounting and Office Manager, and Richard Whipple, Property Manager, worked tirelessly behind the scenes to ensure that phones were answered and forms received as well as endless painting and mowing so that camp was sparklingly beautiful for everyone to enjoy this summer season.



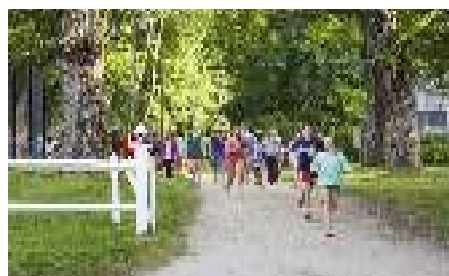
2017



Our future is bright and we're so excited about the 2018 season based on the success of our 2017 season and we cannot wait to get started on it all. We hope to see you back at camp for 2018 or at any of our other events (both in person and virtual) before Opening Day, June 23, 2018. Thank you, as always, for your continued loyalty and support of Fleur de Lis. Our community of people is our greatest strength and it continues to warm my heart every year to read camper evaluations stating that "camp is my home away from home" and that the worst part of camp is "leaving." Thanks for your efforts in creating this culture of "home" for generations of Fleur de Lis girls.



-Lady Carrie Kashawlic



Tuition Assistance

Thank you for your continued generous support of Fleur de Lis to enable us to support campers attending camp! We supported eight (8) campers with over \$25,000 in assistance in addition to the 52 campers who attended the Circle of Fleur de Lis program at no charge.

As part of the philanthropic/service of what Fleur de Lis does every year, a portion of donations given to Fleur de Lis are used to support the tuition assistance program for resident camp and provide the Circle of Fleur de Lis experience FREE of charge to all girls attending.

The tuition assistance form is available on the web site; the forms are due by March 1 annually and the committee then begins reviewing the applications to the available assistance. After March 1, the applications are reviewed on a rolling basis until all the assistance funds are depleted.

--Lady Carrie Kashawlic

Big & Little Weekend 2017

Big and Little Weekend saw some BIG (and little) changes to the program this summer! Thanks to all 74 people who attended Big & Little Weekend from August 18-20. It was a huge success, even as we learned what "squads" are and how they work! Alumnae Carrie Finizio and Annie Lundsten were also an enormous help; Annie shared a special Password and volunteered to lead Rifle in the range. In addition to trying out riflery, our pairs tried their hand at ceramics, floated on surfboards, and tested out some bows and arrows.



The program continues to be an amazing way to introduce girls 6-11 —and their moms (or aunts or grandmas) to overnight camp. Girls learn how camp works, from Colors to Password to squads, but also get a sense of what it's like to make a new camp friend, to attend an Evening Program, and to roast s'mores while singing camp songs. If you know a girl under 10 years old who could be an awesome camp kid, tell them about Big & Little if they're nervous to try camp for a few weeks!

- Lady Hannah Weiner

Save the Date

Big & Little Weekend

August 17-19, 2018

For more information or to register for Big & Little 2018 visit our website (fleurdeliscamp.org), call (603-762-8593), or email (hannah@fleurdeliscamp.org) Hannah Weiner. See you in 2018!

Retention & Recruitment

During the summer 2017, Fleur de Lis saw 52 new campers make new friends, gain confidence, and try new things. These girls came from all over New England and found Fleur de Lis in a number of different ways: most of them were referred through word of mouth, some of them found us online, and some are legacy campers.

Our recruitment strategy shifted slightly for this summer with the start of the Ambassador Program and the inclusion of more digital campaigns. These initiatives paid off; we were hoping for 20 Junior campers in 2017, and found ourselves with 29 Junior campers.

Another huge initiative for FDL has been the Big & Little Weekend program. With this program, we are able to fully immerse moms/grandmas/aunts and their daughters/granddaughters/nieces in Fleur de Lis, showing them what it really feels like to be a camper here. In 2017, we saw 11 campers sign up for camp coming from the Big & Little program.

With these successes and hoping to maintain momentum on the recruitment side, the attention will shift slightly to retention. How can we show these campers the best summer ever, so that they want to return—and sign up for next summer before they even leave camp? Our early registration campaign for 2018 included a fun T-shirt (designed by 2017 staff) as an incentive, as well as a more streamlined on-site registration process. We will keep reminding families through social media, email, and events that the place they want to be is the camp called Fleur de Lis—so they should sign up now for summer 2018!

- Lady Hannah Weiner

Best of the Best!

Thanks to everyone who voted for Fleur de Lis Camp in both the New Hampshire Union Leader and the Boston Parents Paper! Fleur de Lis was voted in the Top 5 for Boston Parents Paper's Family Favorite Overnight Camp and in the top 5 Readers' Choice Camp in the New Hampshire Union Leader. This is a huge deal for us because it helps us bring in new amazing campers. We also get to show New England how great it is to be a Fleur de Lis girl. Voting for these awards takes place in March and April, so prep your browser tabs and get ready to start clicking when ballots are open!



Lady Nurse Service Day 2017



This past June we had yet another opportunity to remember and celebrate the life of Lady Diane Haessler – Lady Nurse – who gave so much to camp and to generations of campers. On June 10th about 50 volunteers came out to camp to help with a myriad of tasks. All things that are essential in getting camp up and running for the summer seasons.

Things such as moving bunks, scrubbing the alter, washing windows & floors, replacing padding and tennis balls in the dining hall, making beds for the international staff, and so much more. Be sure to mark your calendars for next year's...



and tennis balls in the dining hall, making beds for the international staff, and so much more. Be sure to mark your calendars for next year's...



Lady Nurse Service Day June 9, 2018.

-Lady Sarah Castro

#FDLmonth #Circlemonth

March may not be that close, however, you can still start planning your #FDLmonth and #Circlemonth get-together: meet an old tent mate for coffee, plan a weekend trip to your favorite co-counselor, or get your CT group together for dinner. Whatever you decide to do during the month of March, be sure to share them on social media with the hashtag #FDLmonth or #Circlemonth or email them to hannah@fleurdeliscamp.org.



FDL at Kimball Farm

On Saturday, May 5, 2018 from 11am until 2pm, the Fleur de Lis Camp community will be hosting a gathering at Kimball Farm in Westford, Massachusetts!

This event is a great chance for families to meet up to talk about the upcoming summer, as well as for new and potential families to talk with staff, meet alumnae, and of course: enjoy free ice cream! Ladies Carrie Kashawlic, Hannah Weiner, and Sarah Castro will be there with tickets for you and your family and friends to indulge in Kimball's flavors.



Kimball's annual event is held the first Saturday in May and has been an amazing way for our community to welcome new families, meet Buddy Families, and reconnect before camp begins in June. Share in the excitement of the (almost) summer season with your Fleur de Lis family! Save the date and we'll see you at Kimball Farm.

**See you at Kimballs on
May 5th!**

Thank You for Being Like Jane



We want to thank everyone who gave to the Be Like Jane Campaign. You helped us to not only achieve but surpass our goal of raising the last \$100,000 for the reserve fund. Getting FDL to have a reserve fund of \$1Million is something that Jane Lawson set out to do when she became President of the board. Now for the numbers...we raised \$105, 292 from 188 donors. You helped to reach that goal, thank you! -Lady Sarah

*If you did not have the opportunity to donate to BLJ you can always donate to FDL at anytime.
Checks can be mailed to 120 Howeville Road, Fitzwilliam, NH 03447
or you can go to donate.fleurdeliscamp.org*

Put Your Foot on a Loud, Loud, Loud Pedal.

Make Lots of Noise! *continued*

years. In 2004, Jane took over as the President of Fleur de Lis.

Jane has always been a leader with vision. She was able to both focus closely on the issues at hand and set sights on what was needed to ensure the longevity of Fleur de Lis. She led the Corporation through the process of creating a vision statement and updating its mission. She set a



goal of bringing the experience of camp to more girls who wouldn't typically have the advantage of attending Fleur de Lis. Through these efforts we have a robust financial assistance program at camp, and we have Circle of Fleur de Lis, which provides a free week long camp program for girls who have lost a parent. We have completed a major capital campaign and built a gorgeous new dining hall. We have a more involved alumnae base and volunteer force because of Jane's leadership and an increasingly instrumental Corporation base for helping camp fulfill its vision. We have an expanded year round staff and facilities that have been upgraded and are expertly maintained. It's impossible to walk the Fleur de Lis grounds without feeling a sense of pride and gratitude for the beautiful buildings and property.

In addition to all of this, Jane has always had a fiscal mindset when guiding Fleur de Lis. This story is now hopefully a familiar one—when Diane and Jane took over the leadership of FDL from Lady Frances, they drove up to camp and walked the property with Henry Whipple. They saw the property with new eyes, looking closely at all the places where buildings needed serious repair and systems

were in need of overhauls. At the time camp had a savings account that held \$1,700 for expenses beyond those of running the actual camp program. Diane and Jane turned to one another and pledged that they would roll up their sleeves and get to work to ensure camp's future. And they did just that. That \$1,700 savings account is now a reserve account with over a million dollars. Fleur de Lis has a successful investment strategy and has invested in our property and program. It truly cannot be overstated that Jane's vision and fiscal clarity has led us to the solid ground upon which we currently rest. We are fortunate that Jane will continue to serve as a Corporation member and sit on the Development Committee. We know that we will continue to benefit from her guidance.

I know that I am not alone in expressing my most sincere thanks to Jane for all the wisdom, expertise, and friendship she has brought to our lives and to this place that we all hold so dear. Most of us have speculated at some point in our lives about the sense of magic that exists at Fleur de Lis. It is a place that brings a sense of belonging, confidence, and community to so many girls and women and has done so for nearly 90 years. That magic is one of the greatest gifts in so many of our lives. And, that magic does not just happen. It exists because of the efforts of so many. Jane has led that pack, leaving a trail of that magic for all of us to continue to follow. Thank you, Jane.

- Lady Diane Foster



Welcoming 3 New Corporation Members!

At our summer Corporation Meeting, we voted in three new members. We'd like to take a moment to introduce them to you.

Carrie Wickenden Finizio

Carrie attended FDL for 10 years, starting in 1981 as a 1st year junior, completing all eight (8) years as a camper, one (1) year as a CT, and later one (1) year as a counselor in 1991. Camp was an integral part of her childhood, not only offering her unsurpassed fun every summer but also helping her build both confidence and independence. She is pleased to continue her affiliation with FDL now as a mom. Her older daughter, Rebecca, started in 2014 as a 1st year Junior, attending for 5 weeks this summer as a 1st year Mid. Carrie and her younger daughter, Aly, went to Big and Little together last summer and this year, Aly started at FDL as a 1st year Junior.

Professionally, Carrie has been working in the marketing field since graduating in 1995 from Bowdoin College in Maine. She began in media (before the internet even entered the marketing sphere!), shifted to sports and event marketing, and finally focused on consumer insight/market research which she has been doing since 2000. She is happy to work to assist FDL as we work to understand our current, former, and/or prospective campers. She is also eager to help camp in other areas as well.

When she's not working, Carrie enjoys spending time outdoors with her family. She lives in Concord, MA, which has tons of outdoor offerings enabling Carrie and her family to enjoy time kayaking, biking, and hiking (or snowshoeing when the trails are covered with snow). They are also avid skiers and drive through Fitzwilliam numerous times during the winter as they head to the mountains- which prompts the singing of camp songs of course. She also volunteers with the parent-teacher group at her elementary school and with her

daughters' Girl Scout Troops.

Sarah Federman

Following in the footsteps of her grandmother, aunt, and two cousins, Sarah leapt so gleefully into her place at Fleur de Lis, she had to be slowed down. At age 7, while visiting her cousin at camp, she begged Lady Liz to let her move in immediately. Lady Liz held firm and made Sarah wait until the next summer when she began as a 2nd year Junior and continued for eight (8) consecutive summers.

Sarah was thrilled when Circle came to be and has participated as a week-long volunteer for three (3) summers, including as co-CT head with Mary Conant in 2016. She is currently working with Richard Whipple, Property Manager and Carrie Kashawlic, Camp Director on a historical map of camp for the 100th Anniversary.

The work at Circle overlaps well with her professional work which helps individuals and communities in the wake of atrocity. Her work began in college while working and living at Green Chimneys Farm with New York's most abused kids. Then, life went on and she found herself in business for a time. After ten (10) years as a senior advertising executive, Sarah's company transferred her to Paris. After seeing the devastation left by the World Wars in Europe, she pursued her PhD in Conflict Resolution and graduated in 2015 from George Mason University. Her dissertation addressed the role of the French National Railways (SNCF) in the WWII transportation of Jews to death camps and the conflict continuing today in the United States over that role. She interviewed 120 people, including 80 Holocaust survivors (almost all of whom were made orphans by the Holocaust). During her research, she became a de facto mediator; the U.S. State Department and the U.S. House of Representatives called on her for assistance.

Welcoming 3 New Corporation Members!

Sarah is publishing a book and continues to present her findings at conferences around the world. After completing the faculty-awarded GMU Presidential Scholarship, she won a writing residency with the Carey Institute for Global Good, the Amtrak Residency, and the Kathryn Davis Fellowship for Conflict Resolution. This spring, she taught the Role of Market Actors in Mass Atrocity at Grinnell College.

Sarah is also the co-author of the forthcoming textbook, *Introduction to Conflict Resolution: Discourses and Dynamics*. Based on this book, Sarah has taught conflict resolution to undergraduates at George Mason University and to graduate students at France's leading school of political science (SciencesPo), and the University of Malta. Drawing on her five years with the Center for Narrative and Conflict Resolution, Sarah will train the 14 faculty directors of the Middlebury Language Schools to lead productive political conversations. In addition to a teacher and author, she is a hired speaker and consultant. Her website, [Language of Conflict](#), considers how the words we use to describe our conflicts help us to find solutions or further entrench our problems.



Libby Nichols Collet

The Hemlock Grove at Fleur de Lis Camp is one of Libby's favorite places – having been a camper in the Junior, Mid and Senior fields before working as a CT and then counselor. Many of her best memories are from, and closest friendships started, at FDL. She currently volunteers at Circle Camp.

She attended Wheaton College and Boston University School of Law. Libby has served on the boards of Hospice of Maine and Camp Bishopswood. The majority of her career has been spent in health care as Executive Director of a physician association and as the Director of Strategic Initiatives for a multispecialty physician organization. More recently she joined Maine Huts & Trails, a nonprofit organization whose mission is to create and operate a world-class system of backcountry trails and eco-lodges for people-powered recreation to enhance the economy, communities and environment of Maine's Western Mountain region, as the Deputy Director. At MH&T her primary roles are Development, Group Outreach and Human Resources.

She and her husband Paul live in Maine where they enjoy fat tire biking, skiing, hiking and occasionally spending time with their two (2) sons Alden (28) and Ryan (24). Libby's sisters Meredith Friend and Jan Brown, and niece Annie Brown, also attended FDL.

This would not be possible without you...

We would like to take this opportunity to thank everyone who has given to Fleur de Lis from October 1, 2016 to September 30, 2017. We truly would not be able to do this all with out you.

(We have made a sincere effort to recognize everyone who was kind enough to send in a donation in the last fiscal year. If we have inadvertently omitted your name or misspelled it, please accept our apologies and let us know.)

LEADERSHIR CIRCLE (\$5,000+)

Anonymous
Christine Creelman
Diane Foster
Mr. & Mrs. Peter Foster
Natalie (Cull) Joslin
Jane Lawson & Howard Russell
Ingrid Scanlon, Eric Haessler, Karen Haessler, and Sarah Haessler

GOLD CIRCLE (\$2,500-\$4,999)

Deborah W. Anderson
The Ascienzo Family Foundation
Julie Raye Horton
Income Research +Management
Patty & John Ladany
Betsy (Baker) Lamb
Katharine & Christian Roth
Anne & Curt Smith

RED CIRCLE (\$1,000-\$2,499)

Agnes M. Lindsay Trust
Lisa Merker Allen
Anonymous
Ellie Bates
Patsy J. (Lady Bug) Brown
Julie (Cannistraro) Carson
Estate of Paul E Clayton
Brandon Downs
Laura F. Geary
Getz Charitable Trust
Mr. & Mrs. William F. Hofmann III
Marcia (Somers) & Charles Krause
Mary W. Tuttle & David M. Lemonick
Debbie Glendinning Light
Mickey Chehames Lutz
Mr. & Mrs. Jason & Megan (O'Keefe) Madden
Marco Consulting Group, Inc.
Marion Cohen Trust
Shirley Maynard
McCusker-Gill, Inc.
Mr. Robert McNamara
Claudia (Geary) Miller
Jennifer (Lennox) Moeykens
Sue Hardman Nordstrom
Mr. and Mrs. Patrick O'Keefe
Linda Wickenden O'Malley
GDS Enterprises Inc. (Domino's Pizza)

Elizabeth & Fidel Ramos
Hannah (Newhall) & Matt Sanger
Barbara Maynard Scollan
Bonnie (Burns) & Michael Sherman
Nancy & Steven White
Libby Williams
Jeanne (Emerson) & Art Young

WHITE CIRCLE (\$500-\$999)

Chip (Howe) & Dan Baker
Amy Bates
Jane (Keeler) Bennett
Beth (Grosvenor) Boland
Susan Clinkenbeard
Joan M. Cook
Linda Davis
Alicia (Davis) Downs
Philip Dunn
Hillary (Jones) Egan
Chesley (Schultheis) Garrett
Laura H. Hardwick
Leslie D. Harrison
Linda Hatch
Lexy Heatley & Neal Cass
Hypertherm HOPE Foundation
Catherine Jacobs
Mr. and Mrs. Ian Jarrett
Ruth (White) & Robert Keogh
Main Street Congregational Church
Nancy (Dean) Maynard
Ann E. Miller
Perwais and Ann Nihal
Mr. Jonathan Russell
Goff Family
Heather & Stephen Tingle
Bruce C. Treat

GREEN CIRCLE (\$100-\$499)

Christina B. Abbott
Nancy (Vignone) Ackermann
Sally Burns Adams
Kate Young Allen
American Water Charitable Foundation
Nancy Johnson Anderson
Sarah Andrew
Carol Anthony
Kristy (Hofmann) Arredondo
Patricia Baker

Jeremy and Claire Banks
Sue & Jim Belanger
Barbara (Dill) Bell
Wendy Korjeff Bellows
Bill & Lisa Laskin
Stacy (Haughey) & Mike Braatz
Richard Briggs
Janet (Nichols) & David Brown
Bruce & Katie Stebbins
Joanna Stephens Buckley
Carolyn Bump
Kathy Davis Cadigan
Emma Carney
Lauren & David Carney
Nancy Carney
Celia Insurance Agency
Donna E. Chapman
Patricia D. Clark
Barbara G. and David E. Clinkenbeard
Elizabeth Nichols Collet
Carol (Ludlum) Collier
Christina & Christopher Comparato
Joseph A Connolly
Cheryl & David Cotney
Mr. and Mrs. Robert B. Couch
Sarah (Pollard) Cowan
Kevin and Lisa Cox
Christine (Hassig) & Brian Cressey
Mary (Gannett) Crowell
Michelle Culver
Mark Cushing
Dante & Judy Gordon
Sharon & Paul Davis
Janie & Bradford Denning
Thomas Donelan Jr.
Shevaun & Thomas Doyle
Patricia Hope Edmonds
Carrie Egan
Ellie (Gaudin) Everts
Mr. & Mrs. John Farrington
Carrie Wickenden Finizio
Donna Finnerty
Meredith (Nichols) Friend
Linda & Peter Froelicher
Paula Garland
Mr. & Mrs. Bill Gladstone
Margaret (DeMallie) Goodnoe
Catherine Gothard
C.J. (Navins) Hacker

Susannah Hansen
Susan & W. Alan Harding
John and Diane Healy III
Margaret Anne Heuss
Gwen (Davis) & Emmett Holt Jr.
Priscilla (Chace) & Robert Horst
Ernest & Jean (MacMillan) Howell
Innovative Software Solutions, Inc.
Annie Jenkins
Sylvia Jenkins
Juliana & Dylan Jones
Lisa & Stuart Jones
Charles Wattles
Carrie Kashawlic
Sandra (Chadwick) Keegan
Leslie (Henchey) Kehoe
Bob Keiver
Anne Kemper
Samantha Keogh
Stephen and Kelly Keogh
Wendy Lawless & David Kidd
Robert Kingman
Marjorie King Martin
Mr. and Mrs. Irving Kofsky
Krakow & Souris, LLC
Annie Lahey
Larry Young and Toni LaMonica
Lynne (Van Dusen) Lawhead
Nancy Lawson
Nancy London & John Petersen
Phoebe B. Lowell
Laura Pineo Macs
Sara Farragher Massari
Jennifer Maynard
Allison McCartney
Beverly Baldwin McCoid
Grace McDonough
Kristina Franson McGee & Kevin McGee
Mallory Young Michaelles
Michelle Milam
Laura (Wicki Hardwick) Mitchell
Alison & William Monaghan
Carol (Creelman) Moriarty
Kelly Mosher
Patricia and William Mullane
Estate of Florence Rowe Munter
Tabitha Nash
Colt & Peter Navins
Robin (Van Ness) & Clint Nelson
Katharine & John Newhall
Rebecca Newhall
Jack Nicolas
Katharine Norris, MA
Mrs. David Ottenjohn
Maddie (Jenkins) Ouellette
Pat Judah Palmer

Steve & Marion Paolini
Pamela Parkinson
Sharon & Brian Paul
Melissa & Michael Plone
Mr. David Pollard
Jean (Garner) & Ralph Pope
Mallory (Robinson) & Michael Pruneau
Rebecca Keller & Tad Putney
Kathryn Radtke
Elena Ramos
Carol (Ingraham) Redden
Hilary Robinson
Katherine (Russell) & Matson Rogers
Betsy (Johnson) Roguet
Peter & Sarah Sandback
Mr. and Mrs. Timothy K. Saunders
Margaret Fritz Schneider
Bridget Scollan
Segal Roitman LLP
Joe and Beth Sellers
Stephen O'Leary Shay
SMACNA Boston
Barbara Schultheis Snyder
Richard R. Sterling
Richard Stoppe
Chrissie Thayre
Ryan Toland
Verizon
Molly Couch Ward
Megan Russell
Hannah Weiner
Jeanne (Vignone) Wentzell
Martha & James Wickenden
Mary (Maynard) Wilson
Dominique & Steve Winn
Worcester Air Conditioning, LLC
Jim and Priscilla Worrall
Elizabeth Young
Lisa Zenk

COUNCIL CIRCLE (\$25-\$99)

Tony Abbiati
Debbie Graves Adams
AmazonSmile Foundation
Amy & Eric Nelson
William Ancil
Mr. and Mrs. David Anderson
Mr. and Mrs. Richard Anderson
Lisa Angeloni
Judith Ball
Anthony and Heather Bellerose
Bonnie Bessette
Meredith Gage Boone
Nathalie Bouthot & Fady Tanios
Annie Brown
Eden & Bill Burgess
Patrick and Kathleen Caggiano

Rachel Cass
Sarah Castro
Rayna and Claudy Charles
Robin Clements
Meredith Colbert
Mary P. Conant
Elizabeth Jones Crafford
Carolyn (Dansie) Curtis
Damon Spitz & Margaret Jacobi
Kathryn Degenova
Carol DeRoche
Laurel Dezieck
Susan (Means) & Daniel K. Drake
Kenly Drake
Emily & Gregory Donoghue
Steven Englander
Elizabeth B. Eschholz
Sarah (Peanut) Holbrook Evans
Sarah Williams Farrow
Laura Fraser
Pamela (Holbrook) Fricke
John Friedbauer & JianJian Wang
Camille & Ross Galin
Joan (Blanchard) Gay
Carley Goodnoe
Mrs. Richard Gookin
Manuel and Mary Gregorio
Mr. and Mrs. Henry Grilli
Barbara (Stark) Grosvenor
Grove Street Fiduciary Inc.
Lindsey Guinan Gund
Jane (Evans) Hamilton
Heather & Thomas Unterseher
Caroline Heatley
Mrs. Lance Heaton
Noelle Heckscher
Tricia & Erich Hertz
Samantha Hickey
Susanna Kwong & Jeff Ho
Marcia & George Holbrook
Jonathan Howe
Mrs. Leland B. Howe
Joanna Jeffery Farrell
Jennifer & Michael Lee
Jonathan & Hallie Zagrocki
Sigrid Bergenstein and Bill Joseph
Justin & Elizabeth Loew
Katherine Kelly
Ken & Nancy Johnson
Carol Ann Killian & Thomas Burnette
Robin (Haynsworth) & Richard Kowalski
Una-May O'Reilly & Blake LeBaron
Sandra and Stephan Lemon
Li Ling & Qian Ma
Marina and Mac MacDonald
Paul and Michelle McDonough
Louise McRae

Meritxell Cequier & Esteve Torrens
Sue (Lennox) Millard
Ann Bullock Moses
NGM Charitable Foundation
Marc Norberg
Mardie & Jack Orshak
Aine & John Pappas
Elisa & John Pollard
Stephanie Pollard
Nick Powers & Sydney Cook
Christina Proppe
Leslie Rioux
Evan Rosset
Heidi Scanlon
Patricia Schell
Rachel & Charlie Schewe
Shelley Earley & Kurt Schmidt
Dr. and Mrs. Edward J. Schreier
Elizabeth Seale
Lisa & Brian Sheehan
Shauna Simpson
Bonnie Slayter
Elizabeth Smith
Karin Strickland
Maureen Hickey & Bill Sullivan
Colleen Vanarsdale
Kristin Vandertang
Diane (Doviak) Webb
Lucy Weiss
Carolyn Cowan and John Wilpers
Jim & Sally Wilson
Danica Wood
Sarah Young
Lenard & Delphine Zohn

UNDER \$25

Andra & Paul Mattaliano
Amanda Bouchard
Nicole Brown
Sarah Clyburn
Kelly Cole
Liz Corgnati
Rae Duffy
Melissa Hieger & Michael Collins
Chloe Howe
Susanna Jacobus
Jennifer & Darryl Trowbridge
Pamela Keilig
Samira Khatib
Matoaka Kipp
Lester & Sheila Humphreys
Maria & Arthur O'Callaghan
Stacie Martin
Allison McGrane
Neely Moore
Mr. Richard Sperry
Priyanka Nadar
Chris Parker

Mital Patel
Tommy Prioletti
Sydney Lisa Russell
Amy Schembechler
Walter Serrate Jordan
Graham Smith
Antonia Spyridis
Jeannie Suarez
Tedd & Sara Parker
Tonya & Robert Klause
Jaimie Trepanier
Jenna Weiss
Richard Whipple

CIRCLE DONORS

Agnes M. Lindsay Trust
Deborah W. Anderson
Sarah Andrew
Anonymous
The Ascienzo Family Foundation
Jeremy and Claire Banks
Ellie Bates
Anthony and Heather Bellerose
Beth (Grosvenor) Boland
Amanda Bouchard
Nicole Brown
Patrick and Kathleen Caggiano
Julie (Cannistraro) Carson
Celia Insurance Agency
Robin Clements
Sarah Clyburn
Kelly Cole
Joseph A Connolly
Liz Corgnati
Mr. and Mrs. Robert B. Couch
Kevin and Lisa Cox
Christine Creelman
Christine (Hassig) & Brian Cressey
Mary (Gannett) Crowell
Michelle Culver
Mark Cushing
Kathryn Degenova
Carol DeRoche
Laurel Dezieck
Thomas Donelan Jr.
Brandon Downs
Rae Duffy
Donna Finnerty
Diane Foster
Pamela (Holbrook) Fricke
Linda & Peter Froelicher
Joan (Blanchard) Gay
Laura F. Geary
Manuel and Mary Gregorio
Grove Street Fiduciary Inc.
Leslie D. Harrison
John and Diane Healy III
Lexy Heatley & Neal Cass

Margaret Anne Heuss
Samantha Hickey
Julie Raye Horton
Ernest & Jean (MacMillan) Howell
Hypertherm HOPE Foundation
Income Research +Management
Innovative Software Solutions, Inc.
Catherine Jacobs
Lisa & Stuart Jones
Sandra (Chadwick) Keegan
Bob Keiver
Ruth (White) & Robert Keogh
Samantha Keogh
Stephen and Kelly Keogh
Samira Khatib
Robert Kingman
Krakow & Souris, LLC
Betsy (Baker) Lamb
Larry Young and Toni LaMonica
Jane Lawson & Howard Russell
Phoebe B. Lowell
Main Street Congregational Church
Marco Consulting Group, Inc.
Marion Cohen Trust
Stacie Martin
Sara Farragher Massari
Shirley Maynard
McCusker-Gill, Inc.
Paul and Michelle McDonough
Allison McGrane
Mr. Robert McNamara
Louise McRae
Michelle Milam
Ann E. Miller
Claudia (Geary) Miller
Neely Moore
Kelly Mosher
Patricia and William Mullane
Jack Nicolas
Marc Norberg
Katharine Norris, MA
Mrs. David Ottenjohn
Pat Judah Palmer
Chris Parker
Mital Patel
GDS Enterprises Inc. (Domino's Pizza)
Melissa & Michael Plone
Elisa & John Pollard
Tommy Prioletti
Peter & Sarah Sandback
Hannah (Newhall) & Matt Sanger
Patricia Schell
Amy Schembechler
Shelley Earley & Kurt Schmidt
Barbara Maynard Scollan
Segal Roitman LLP
Joe and Beth Sellers
Walter Serrate Jordan

Stephen O'Leary Shay
SMACNA Boston
Anne & Curt Smith
Graham Smith
Antonia Spyridis
Jeannie Suarez
Chrissie Thayre
Ryan Toland
Jaimie Trepanier
Colleen Vanarsdale
Kristin Vandertang
Mary (Maynard) Wilson
Danica Wood
Worcester Air Conditioning, LLC
Jeanne (Emerson) & Art Young
Lisa Zenk

IN KIND DONORS

Kate Young Allen
Chip (Howe) & Dan Baker
Patsy J. (Lady Bug) Brown
Paul Carthas
Community Transportation, LLC
Christine (Hassig) & Brian Cressey
Mrs. Jeannine Daly
Fleur de Lis Camp
Carrie Frederiksen
Laura F. Geary
C.J. (Navins) Hacker
Lexy Heatley & Neal Cass
Julie Raye Horton
Diane Keogh
Ruth (White) & Robert Keogh
Carol Ann Killian & Thomas Burnette
Betsy (Baker) Lamb
Larry Young & Toni LaMonica
Jane Lawson & Howard Russell
Claudia (Geary) Miller
Rebecca Newhall

William N. Prigge, PC
PrintFUSION
Salvatore's Restaurant
Schuchard Capital Management
Tobey Packard Shepherd
Mr. & Mrs. Steve Skilton
Jim & Sally Wilson

IN HONOR OF

Sally Burns Adams
Betty Payne Bruns
Julie Cannistraro Carson
Ann Chesley
Beth Chesley
Susan Clinkenbeard
Christine Cressey
Ellen Dezieck
Addie Egan
Carrie Sherman Egan
Sarah Federman
Kate Gladstone
Lexy Heatley & Neal Cass
Stephanie Heckscher
Ruth White Keogh
Betsy Kirtland
Evelyn Eynon Krusell
David Lamendola
Jane Lawson
Rita Ludlum
Ruth Eynon Manghu
Nancy Maynard
Shirley Maynard
Kristina McGee
Deborah Saybolt Merker
Anna Monaghan
Mumphie Moore
Neely Moore
Del Morin

Ted & Dee Morse
Layla Scollan
Tim & Karin Strickland
The Next Generation of Inspiring Women
Donald Vandenburg
Betsy Adams Walsh

IN MEMORY OF

Betsy Adams
Caroline Elizabeth Anderson
Frances Beede
Debbie Carney
Wendy Carney
Katherine Freitas Churchill
Clara DeMallie
Stanely Federman
Evelyn Eynon Hardman Grussell
Diane (Lady Nurse) Haessler
Herb Haessler
Dorothy Jenkins
Melody Kashawlic
Patricia Keiver
Katie Ladany
Wanda Lawson
Katherine Ludlum
Ruth Eynon Manghue
Anne Ewing McNamara
Florence R. Munter
Genevieve N. Radtke
Kathleen Compton Sherrerd
Betty Ann Traynor
Pam Trussell
Grant J. Villemaire

Thank You!

Announcements!

The following are updates that former campers, counselors, family members, and friends have sent along to share with the Fleur de Lis community.

Mary Tuttle & David Leominck share, "Sally (camper 1998-2003) got married last summer to Dan O'Shinsky. They live in New York city, where Sally is a Social Worker at Metropolitan Hospital. She got her MSW degree at NYU and she is a C.S.W. in NY State."

Jane Bennett shares that 2 of their 8 grandsons are attending Camp O-AT-KA for their 4th summer, where their 3 sons attended. Jane would love to have a granddaughter to send to FDL.

Ann Miller got married on June 10, 2017!

Stay in Touch

We want to hear from you! If you have any alumnae updates send them to sarah@fleurdeliscamp.org.

Follow us for updates about the summer, events near you, and so much more!



[www.facebook.com/
FleurdeLisNHCamp/](http://www.facebook.com/FleurdeLisNHCamp/)



[@fleurdeliscamp](https://www.instagram.com/fleurdeliscamp)



[@FleurdeLisCamp](https://twitter.com/FleurdeLisCamp)

Administrative Staff

Carrie Kashawlic

Executive Director

carrie@fleurdeliscamp.org | 603-585-7751

Karin Strickland

Office & Accounting Manager

Karin@fleurdeliscamp.org | 603-733-7369

Richard Whipple

Property Manager

603-585-9732

Hannah Weiner

Assistant Director for Camper Development

hannah@fleurdeliscamp.org | 603-762-8593

Sarah Castro

Assistant Director for Advancement

sarah@fleurdeliscamp.org | 603-585-7758



Fleur de Lis Camp

120 Howeville Rd.
Fitzwilliam, NH 03447
Address Service Requested

Non-Profit Organization
U.S. Postage
PAID
Fitzwilliam, NH
Permit No. 254



Fleur de Lis Camp Mission Statement



Fleur de Lis Camp promotes the well being of girls and young women socially, educationally and physically. We provide opportunities and experiences to help them become self-sufficient and productive members of their community and the world.

Fleur de Lis Camp program is conducted in a natural environment, both safe and nurturing, with the intention of fostering leadership skills, citizenship, and self-confidence, while helping each girl reach her full potential. The girls and young women of Fleur de Lis are developed in a spirit of cooperation and respect with a focus on friendship, mentoring, positive example, and challenges appropriate to the individual girl.

Fleur de Lis affirms its responsibility and obligation as a not-for-profit, non-partisan organization serving the welfare of girls and young women. In this spirit we strive to make our program affordable to all.